

EduCare[®]

Serious Youth Violence

The
Children's
Society

No child
should feel
alone

The impact serious youth violence has on individuals and the community is significant. Written in partnership with The Children's Society, this course raises awareness of this major issue. It explains the vulnerabilities and risk factors young people can be exposed to that can lead to them being exploited. It contains key information about the importance of using accurate language to avoid children and young people being incorrectly labelled.



Course details

- Two modules with two multiple-choice questionnaires
- Two CPD credits*
- Optional narration of the course modules and questionnaires for accessibility
- Personalised downloadable certificate
- 70% pass mark
- Printable modules for future reference

*1 CPD credit equals up to 1 hour of learning

Course content

Module 1 Serious Youth Violence

- Understand what is meant by the term serious youth violence and the impact it has on individuals and the community.
- Clarify what we already know about serious youth violence.
- An in-depth look at the vulnerabilities and risk factors that can lead to criminal exploitation and consequent instances of serious youth violence.
- Using a scenario, the process of recruitment and the four main stages; targeting, experience, hooked and trapped are explained.
- Information on child criminal exploitation and county lines, including their definitions.
- In-depth information on what a gang is and the different terminologies such as 'gang', 'youth group' and 'serious organised crime group'.

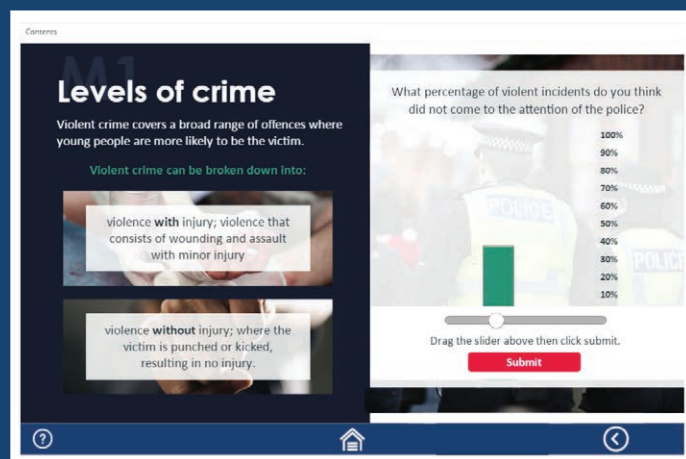


Continued Serious Youth Violence

- Further information on 'Organised Crime Groups' or 'Serious Organised Crime Groups' (OCG/SOCG).
- Details on a report from the Children's Commissioner, which estimates there are 27,000 children in England who self-identify as being a gang members, with tens of thousands more who are on the periphery.
- Current statistics published by The Office of National Statistics on the levels of crime.
- The reasons why young people say they carry a weapon and the different criminal offences associated with knives and offensive weapons.

Module 2 Contextual Safeguarding and Early Intervention

- Details on what contextual safeguarding is and how it's used to understand and respond to young people's experience of significant harm beyond their families.
- The importance of using the correct language including terminology used by both professionals and young people.
- The importance of early intervention, and how recognising and responding to the indicators of potential vulnerability can be effective.
- Signs and behaviours you should look for to help you identify a child or young person that is being exploited and at risk of serious youth violence.
- Case studies to help you understand what young people can and do experience.
- A scenario which allows you to input your thoughts on what you know, the facts and what your concerns are.
- Next steps to support.
- Advice on the importance of challenging and supporting children and young people who are at risk of serious youth violence.



This course is suitable for

Anyone who comes into contact with children and young people.

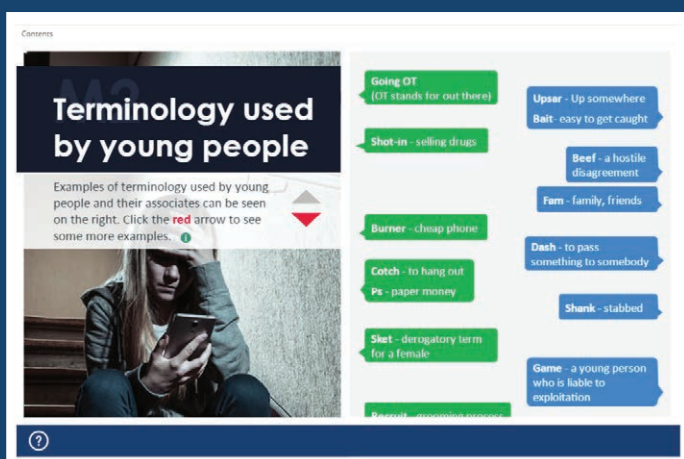
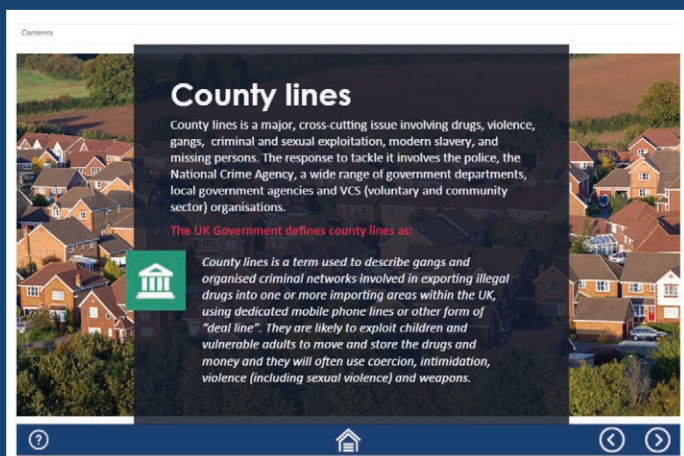


Key features

- Visually engaging and highly interactive
- Videos to highlight key learning points
- Answer explanations for those who achieve the pass mark
- Additional resources to expand learning

Pricing options

1. Available as a standalone course on the EduCare website.
2. Buy as part of one of our EduCare multi-course licences. For further information, please call 01926 436212 to discuss purchase options and licences.



Why choose us?



“ I have now been using the EduCare programme to support understanding in Child Protection and Safeguarding for over 5 years. It is an invaluable resource which allows learners to work at their own pace and also organisations to provide a broad and detailed level of support to staff. ”

Matthew Burfield
Principal/CEO GEMS Education

www.educare.co.uk
01926 436 211
online@educare.co.uk

