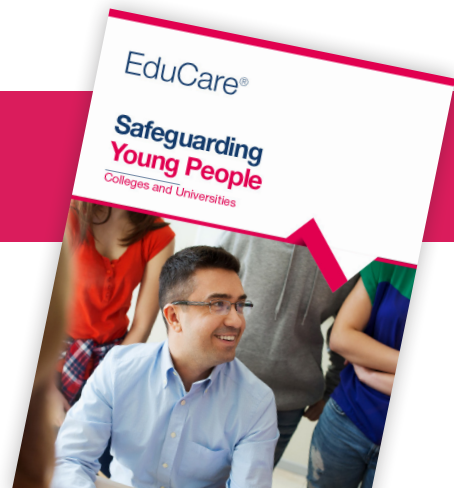


Safeguarding Young People

Colleges and Universities

This course is written for those who work with young people aged 16-25 in a further or higher education setting. It will provide insight into safeguarding young people, covering the essential facts needed to help raise awareness and support young people who may be vulnerable because of their age, relative inexperience or past abusive experiences.



Key features

- **Level 2 course** (as graded against the nationally accepted levels, equivalent to GCSE grades A*-C).
- **A fully interactive course**, comprising one module and one questionnaire.
- **Optional narration for accessibility.**
- **One CPD credit*.**
- **Personalised downloadable certificate.**
- **70% pass mark.**
- **Additional resources include a downloadable module for future reference.**

*1 CPD credit equals up to 1 hour of learning

Course Content:

- The difference between safeguarding and child protection
- The collective responsibility of staff
- Statutory guidance
- Who may be at risk
- Definition of abuse
- The impact of abuse
- Signs and indicators of abuse
- Categories of abuse and what they may involve
- Other risk factors
- Responding to safeguarding concerns and disclosures:
 - How to respond
 - What to avoid
- Allegations against staff
- Reporting a disclosure or your concerns
- Promoting good practice

Why choose us?

“ I would recommend EduCare for Education to other colleges. It's convenient, clear and easy to use. ”

Nichola Routledge, Weymouth College

