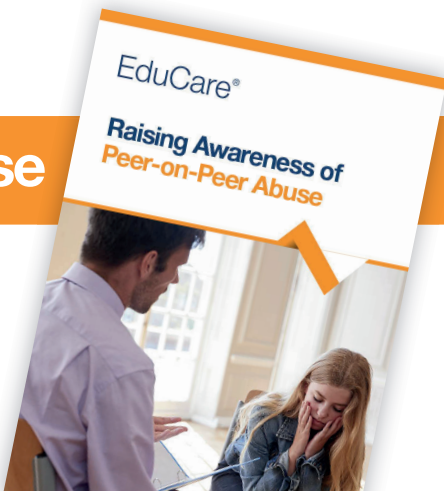


## Raising Awareness of Peer-on-Peer Abuse

Peer-on-peer abuse is any form of physical, sexual, emotional, financial, and/or coercive control exercised between children and young people; this includes intimate and non-intimate relationships. This EduCare course has been reviewed by Dr Carlene Firmin MBE, a leading expert on peer-on-peer abuse.



### Key features

- Level 2 course (as graded against the nationally accepted levels, equivalent to GCSE grades A\*-C).
- One module with a multiple choice questionnaire.
- One CPD credit\*.
- Optional narration of the module and questionnaire for accessibility.
- Personalised downloadable certificate.
- 70% pass mark.
- Written by a leading expert with thought-provoking scenarios.
- Additional resources for further learning and printable module for future reference.

\*1 CPD credit equals up to 1 hour of learning

### Course content

The purpose of this course is to help you:

- understand what peer-on-peer abuse is
- understand the different types of peer-on-peer abuse
- understand who peer-on-peer abuse may affect and what external influences there are
- be aware of the prevalence of peer-on-peer abuse
- understand social norms and peer pressure
- recognise early signs that might indicate abuse
- know what action to take if you know or suspect that a young person is experiencing abuse
- implement preventative strategies within school or college.



### Why choose us?

“ We purchased EduCare for Education to allow us to have control over our staff training from an educational and financial point. It has far exceeded our expectations in that all our staff have been able to complete a range of courses for a financial outlay that has suited our small school perfectly. ”

Johanna Staunton  
Head Teacher, Laleham Lea School

