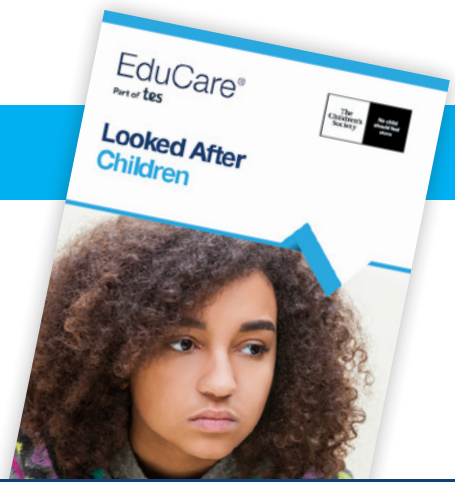


Looked After Children

Written in partnership with The Children's Society, this course will help you to understand more about looked after children. It explains who they are, their needs and their rights in law. You will learn about the negative impact of being a looked after child and the positive difference that you can make. The course includes suggestions for supporting looked after children both in and out of school.



Key features

- One module with a multiple-choice questionnaire
- One CPD credit*
- Optional narration of the course module and questionnaire for accessibility
- Personalised downloadable certificate
- 70% pass mark
- Printable module for future reference

*1 CPD credit equals up to 1 hour of learning

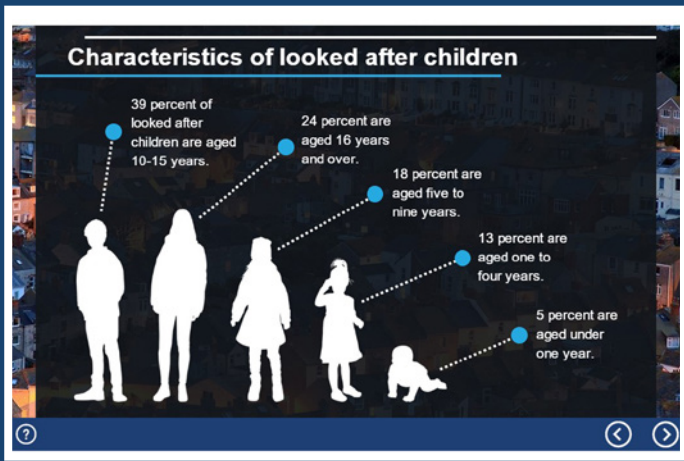
Course content

The course covers:

- Facts and figures
 - What defines a looked after child?
 - Types of placements for looked after children
 - The characteristics of looked after children
- Legislation
 - Relevant UK legislation
 - Nation-specific information for Scotland, Wales and Northern Ireland
- Context
 - Why placements break down
 - Developing a sense of identity
 - Children seeking asylum
- Understanding the needs of a looked after child
 - Health and wellbeing
 - Trauma and attachment
 - Adverse childhood experiences
 - Special educational needs
 - Children going missing
 - School exclusions
- Duty of the school
 - Virtual Schools for looked after children
 - Role of the designated teacher for looked after children
 - Planning for leaving care
- How to make a positive impact
 - Understanding the situation
 - Awareness of attachment issues
 - Finding support

This course is suitable for

Anyone working with children, young people and families, and particularly those working in an educational setting.



Key features

- Visually engaging and interactive.
- Answer explanations for those who achieve the pass mark.
- Additional resources to expand learning including links to relevant legislation and guidance.



Children and young people leaving care

The pathway plans should include: Click the icons to learn more.

Family and social relationships:

Catrina is happy with her friendship groups both in and out of school. She has made friends with some young people that are in foster placement and this has helped her.

Why choose us?



“ The EduCare training modules include a wide variety of sources of information and a very current view of the issue. They are the fastest and most thorough way of accessing information for myself or my team. ”

Alexandra Ihringova
Student Support Coordinator/Burntwood School

www.educare.co.uk
01926 436 211
online@educare.co.uk

