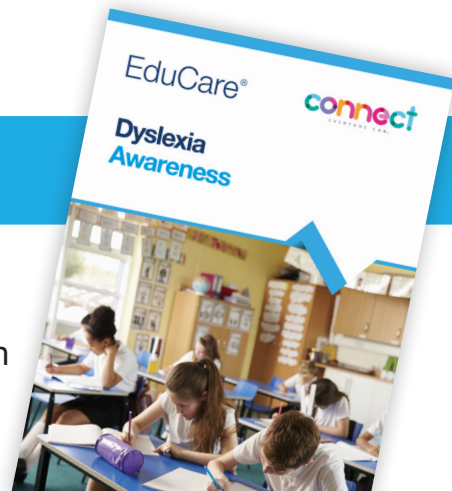


Dyslexia Awareness

Written in partnership with SEND specialists, Connect, this course provides an overview of dyslexia and visual stress for those that work with children and young people. It highlights how dyslexia can affect learning and gives some practical tips to help support those who have dyslexia.



Key features

- Level 2 course (as graded against the nationally accepted levels, equivalent to GCSE grades A*-C).
- One module with a multiple choice questionnaire.
- One CPD hour with a personalised downloadable certificate.
- 70% pass mark.
- Written in partnership with experts at Connect.
- Optional narration of the module for accessibility.
- Additional resources for further learning and printable module for future reference.

Course objectives

After completing this course you will:

1. Understand that dyslexia is one of several specific learning difficulties (SpLDs).
2. Understand more about dyslexia and visual stress and what causes them.
3. Learn about the prevalence of dyslexia and how to diagnose it.
4. Understand the ways that dyslexia can affect learning.
5. Understand how to report concerns about dyslexia.
6. Learn some practical tips to support those with dyslexia.



Why choose us?

“ I have recommended EduCare for Education to other schools in my area. The courses are very authoritative – they contain some brilliant modules which really help in the day-to-day running of the school.

Duggie Speight
Headteacher, Carleton Endowed School

