

## Child Protection Refresher 2020

This course is designed to refresh your knowledge on child protection, keep you up-to-date with recent changes in legislation and guidance, and help you to understand the key learning points from recent serious case reviews. It also covers safer working practices. At EduCare we ensure that all of our courses are written and endorsed by experts. This course is accredited by Kidscape and other leading experts in child protection.



### Course details

- Three modules and three multiple-choice questionnaires
- Three CPD credits\*
- Optional narration of the course modules and questionnaires for accessibility
- Personalised downloadable certificate
- 70% pass mark
- Printable modules for future reference

\*1 CPD credit equals up to 1 hour of learning

### Course content

#### Module 1 Recent Legislation and Guidance

- The evidence for change
  - 2010 Munrow Review
  - 2016 Wood Review
- Recent Acts of Parliament:
  - Serious Crime Act 2015
  - Modern Slavery Act 2015
  - Counter-Terrorism and Security Act 2015
  - Children and Social Work Act 2017
  - Digital Economy Act 2017
  - Data Protection Act 2018
  - Counter-Terrorism and Border Security Act 2019
  - Voyeurism (Offences) Act 2019
  - Coronavirus Act 2020
- Statutory guidance:
  - Working together to safeguard children 2018
  - Keeping children safe in education 2020
  - Mandatory reporting of female genital mutilation (FGM) 2015
  - Children missing education 2016
- Other information:
  - Contextual safeguarding
  - Safeguarding strategy - Unaccompanied asylum-seeking refugee children 2017
  - Serious violence strategy 2018



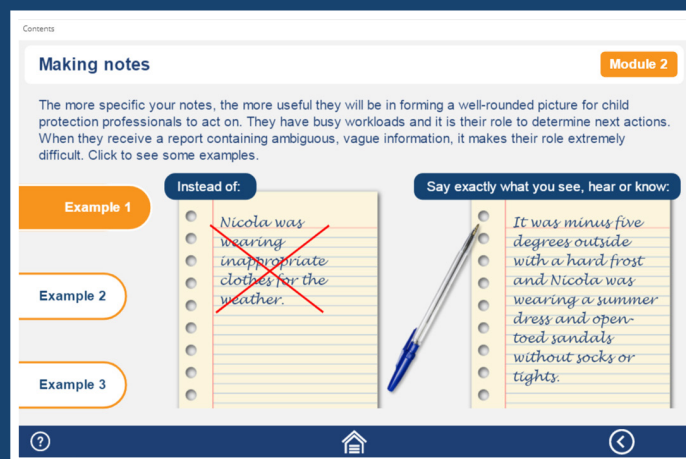
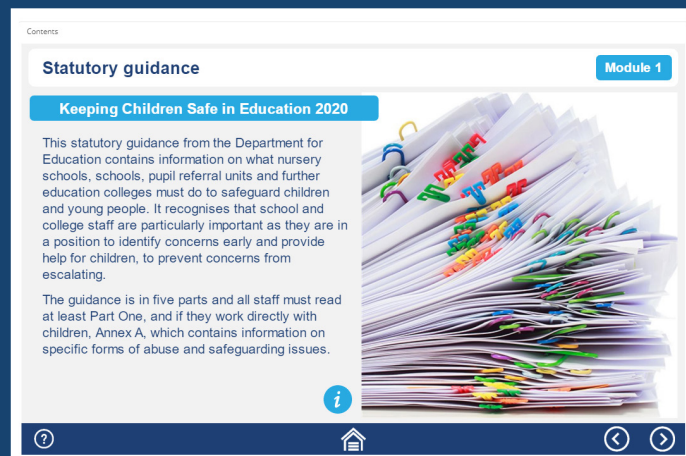


## Module 2 Back to Basics

- The difference between safeguarding and child protection
- The types of child abuse:
  - Physical
  - Sexual
  - Emotional
  - Neglectand the possible physical and behavioural signs of each type of abuse
- Specific safeguarding issues:
  - Child exploitation
  - Female genital mutilation (FGM)
  - Forced marriage
  - Honour-based violence/abuse
  - Child sexual exploitation
  - Child criminal exploitation
  - Extremism/radicalisation
  - Domestic abuse and violence
  - Online abuse
  - Peer-on-peer/child-on-child abuse
  - Sexual violence and sexual harassment
  - Child trafficking and modern slavery
  - Fabricated or induced illness
  - Breast ironing/flattening
  - Homelessness
- Parenting capacity and adverse childhood experiences (ACES)
- The effects of abuse
- How to respond if a child confides abuse to you, how to make notes, allegations against staff and barriers to recognising and reporting abuse

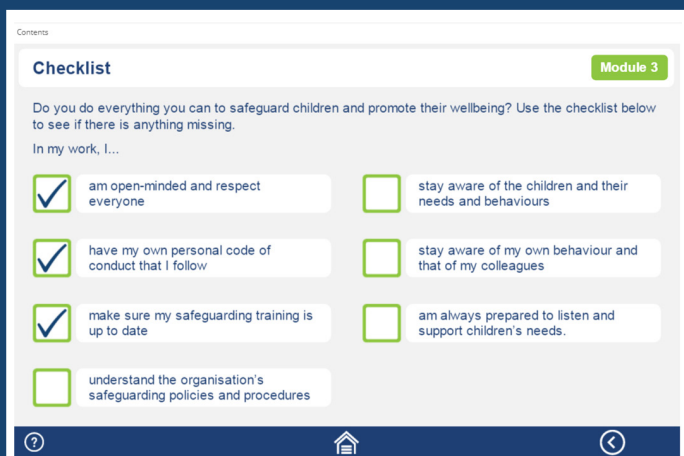
## Module 3 Learning from Failure

- The changing face of safeguarding
  - Coronavirus Act 2020
  - Vulnerable Children
  - Impact on Children
    - Exploitation
    - Domestic abuse
    - Mental ill health and wellbeing
    - Bereavement, loss and separation
    - Missing children and young people
  - Implications for the future
- Operation Brooke and the findings of the resulting case review
- Child criminal exploitation, an example of a serious case review and what we can learn from it
- The underpinning principles of safeguarding and safer working practices, including a checklist to help you assess your approach to safeguarding children and promoting their wellbeing



**This course is suitable for**

Anyone who comes into contact with children aged from birth to 18 years.



## Key features

- Visually engaging and highly interactive
- Video to support learning points
- Examples and illustrative scenarios based on real life cases
- Answer explanations for those who achieve the pass mark

## Purchase options

1. Available as a standalone course on the EduCare website
2. Buy as part of one of our multi-course licences. For further information, please call +44 01926 436212 to discuss purchase options and licences



## Why choose us?



“ I have now been using the EduCare programme to support understanding in Child Protection and Safeguarding for over 5 years. It is an invaluable resource which allows learners to work at their own pace and also organisations to provide a broad and detailed level of support to staff. ”

**Matthew Burfield**  
Principal/CEO GEMS Education

www.educare.co.uk  
+44 01926 436 211  
online@educare.co.uk

**kidscape**  
Help With Bullying

**CPD**  
CERTIFIED  
The CPD Certification Service

